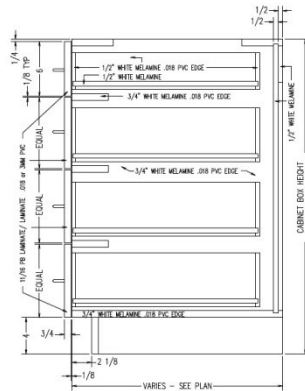




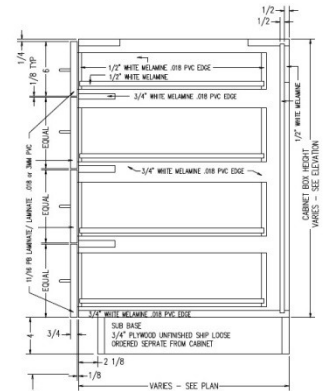
B0D4D-1



Base 4 drawer cabinet,
top drawer 6"



TYPICAL B0D4D
INTEGRAL TOE KICK



TYPICAL B0D4D
FOR SUB BASE

Laminate cabinets are available in a wide range of standard features and options. Additionally, custom configurations are possible. The website supports many of the features needed to quote and order commercial grade laminate or melamine products. The best value is made available by selecting from the standard features listed below (Default settings in the configurator)

Standard door

None

Standard Sizes

Width ranges 9" to 30"
Height ranges 18" to 42"
Depth ranges 9" to 30"

Standard features

Unfinished Sides – 3/4" white melamine
Finished Sides - 3/4" HPL exterior, white liner interior
Unfinished bottom - 3/4" white melamine
Unfinished top stretchers - 3/4" white melamine
Unfinished back – 1/2" white melamine (Dado in sides)
Unfinished shelves - None
Unfinished shelves – None
Drawer front – 3/4" HPL exterior, white liner interior
Cabinet edgeband - .018 PVC
Drawer front edgeband – .018 PVC or 3mm PVC
Drawer Box – 1/2" white melamine

Standard Hardware

Hinges – None
Drawer Slide – FR5000 Fullerter full extension ball bearing (100 lb.)
Pull – 4" satin chrome wire pull
Shelf Clips – None

Standard Options

Finished ends – 3/4" HPL exterior, white liner interior

Custom Options

Sub-Bases – 3/4" plywood construction (Cabinets have a flush bottom, sub bases ordered separately)
Locks – Choice of lock and key options
Finished Interiors – 3/4" HPL interiors with either white liner exterior or matching HPL exteriors, determined by finished end selection.

Accessory Options

See Accessory list which include Hardware, Components and Operations.