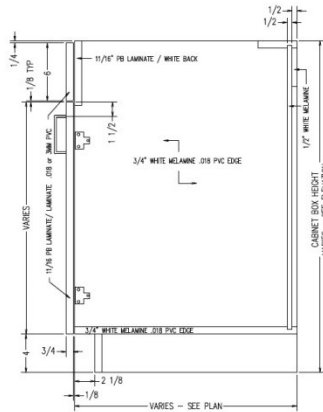




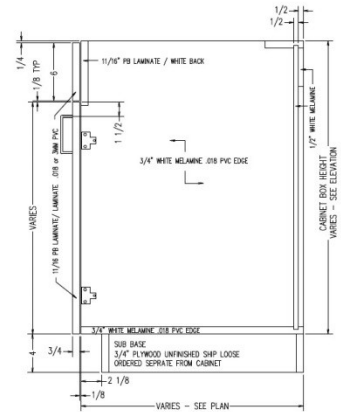
B2D2F-ATK



Base 2 doors, 2 false fronts cabinet,
Toe Kicks attached to back of doors



TYPICAL B2D2F
INTEGRAL TOE KICK



TYPICAL B2D2F
FOR SUB BASE

Laminate cabinets are available in a wide range of standard features and options. Additionally, custom configurations are possible. The website supports many of the features needed to quote and order commercial grade laminate or melamine products. The best value is made available by selecting from the standard features listed below (Default settings in the configurator)

Standard door

Pair Hinges

Standard Sizes

Width ranges 18" to 39"

Height ranges 18" to 42"

Depth ranges 9" to 30"

Standard features

Unfinished Sides – 3/4" white melamine

Finished Sides - 3/4" HPL exterior, white liner interior

No bottom – Toe Kick attached to back of doors

Unfinished top stretchers - 3/4" white melamine

Unfinished back – 1/2" white melamine (Dado in sides)

Unfinished shelves - 3/4" white melamine (Less than 27" wide)

Unfinished shelves – 1" white melamine (27" and wider)

Doors and Drawer front – 3/4" HPL exterior, white liner interior

Cabinet edgeband - .018 PVC

Door and Drawer front edgeband – .018 PVC or 3mm PVC

Standard Hardware

Hinges – 120 degree Blum Hinge

Pull – 4" satin chrome wire pull

Shelf Clips – 5mm metal spoon

Standard Options

Finished ends – 3/4" HPL exterior, white liner interior

Custom Options

Sub-Bases – 3/4" plywood construction (Cabinets have a flush bottom, sub bases ordered separately)

Locks – Choice of lock and key options

Finished Interiors – 3/4" HPL interiors with either white liner exterior or matching HPL exteriors, determined by finished end selection.

Accessory Options

See Accessory list which include Hardware, Components and Operations.