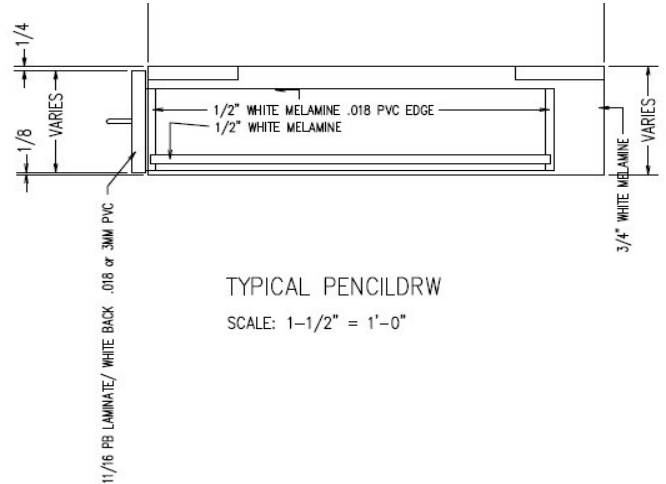




PENCILDRW



Pencil drawer for knee space applications



Laminate cabinets are available in a wide range of standard features and options. Additionally, custom configurations are possible. The website supports many of the features needed to quote and order commercial grade laminate or melamine products. The best value is made available by selecting from the standard features listed below (Default settings in the configurator)

Standard door

None

Standard Sizes

Width ranges 9" to 39"

Height ranges 6" to 12"

Depth ranges 10" to 30"

Standard features

Unfinished Sides – 3/4" white melamine

Finished Sides - 3/4" HPL exterior, white liner interior

Finished bottom - 3/4" HPL exterior, white liner interior

Unfinished top stretchers - 3/4" white melamine

Unfinished back – 1/2" white melamine (Dado in sides)

Drawer front – 3/4" HPL exterior, white liner interior

Cabinet edgeband - .018 PVC

Drawer front edgeband – .018 PVC or 3mm PVC

Drawer Box – 1/2" white melamine

Standard Hardware

Drawer Slide – FR5000 Fullerer full extension ball bearing (100 lb.)

Pull – 4" satin chrome wire pull

Standard Options

Finished ends – 3/4" HPL exterior, white liner interior

Custom Options

Locks – Choice of lock and key options

Finished Interiors – 3/4" HPL interiors with either white liner exterior or matching HPL exteriors, determined by finished end selection.

Accessory Options

See Accessory list which include Hardware, Components and Operations.