



W1D

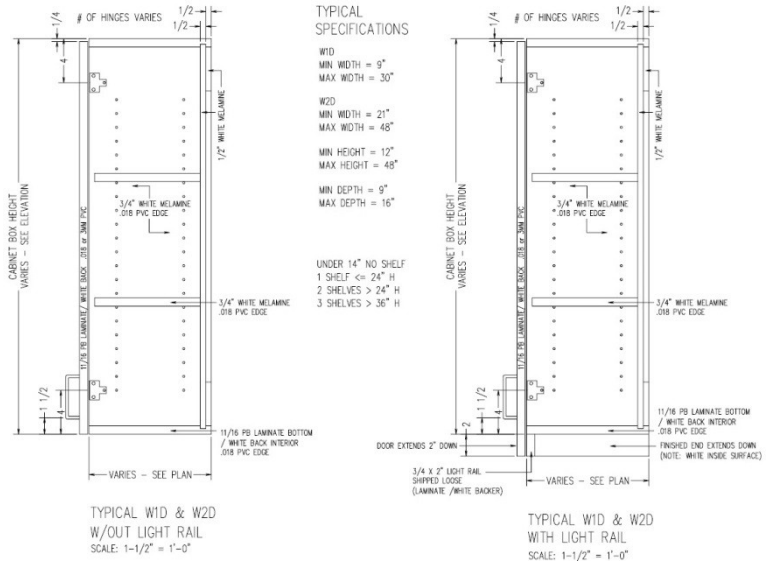


Left Hand Hinge



Right Hand Hinge

Single door wall cabinet



Laminate cabinets are available in a wide range of standard features and options. Additionally, custom configurations are possible. The website supports many of the features needed to quote and order commercial grade laminate or melamine products. The best value is made available by selecting from the standard features listed below (Default settings in the configurator)

Standard door

- Left hand hinge
- Right hand hinge

Standard Sizes

- Width ranges 9" to 24"
- Height ranges 12" to 48"
- Depth ranges 9" to 24"

Standard features

- Unfinished Sides – 3/4" white melamine
- Finished Sides - 3/4" HPL exterior, white liner interior
- Finished bottom - 3/4" HPL exterior, white liner interior
- Unfinished top - 3/4" white melamine
- Unfinished back – 1/2" white melamine (Dado in sides)
- Unfinished shelves - 3/4" white melamine (Less than 27" wide)
- Unfinished shelves – 1" white melamine (27" and wider)
- Doors – 3/4" HPL exterior, white liner interior
- Cabinet edgeband - .018 PVC
- Door edgeband – .018 PVC or 3mm PVC

Standard Hardware

- Hinges – 120 degree Blum Hinge
- Pull – 4" satin chrome wire pull
- Shelf Clips – 5mm metal spoon

Standard Options

- Finished ends – 3/4" HPL exterior, white liner interior
- Light Rails – 3/4" HPL strip, shipped loose for field installation. (Light rail butts finished ends. Cabinet Height does not include the height of the light rail)

Custom Options

- Hang rails – 3/4" plywood "French Cleats". Wall cleat shipped loose for field installation.
- Locks – Choice of lock and key options
- Finished Interiors – 3/4" HPL interiors with either white liner exterior or matching HPL exteriors, determined by finished end selection.

Accessory Options

See Accessory list which include Hardware, Components and Operations.