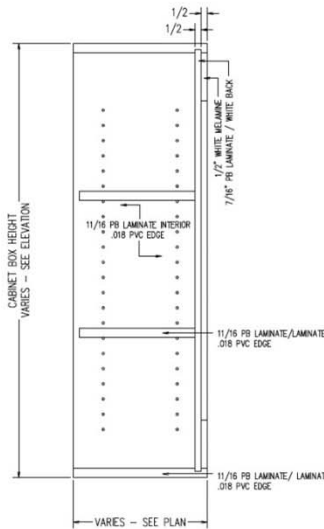


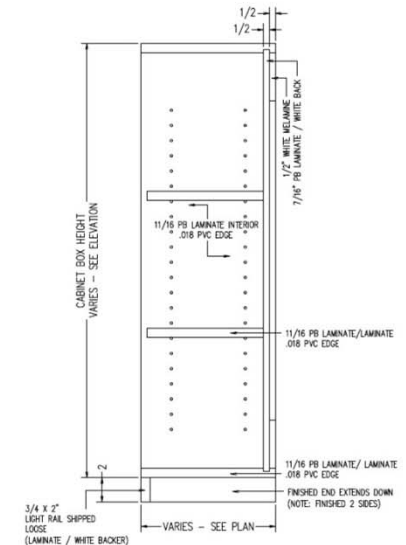
WOPEN



Open wall cabinet



TYPICAL WOPEN
W/OUT LIGHT RAIL
SCALE: 1-1/2" = 1'-0"



TYPICAL WOPEN
WITH LIGHT RAIL
SCALE: 1-1/2" = 1'-0"

Laminate cabinets are available in a wide range of standard features and options. Additionally, custom configurations are possible. The website supports many of the features needed to quote and order commercial grade laminate or melamine products. The best value is made available by selecting from the standard features listed below (Default settings in the configurator)

Standard door

None

Standard Sizes

Width ranges 9" to 42"
Height ranges 12" to 48"
Depth ranges 9" to 24"

Standard features

Unfinished Sides – 3/4" HPL Interior, white liner exterior
Finished Sides - 3/4" HPL exterior, HPL interior
Finished bottom - 3/4" HPL exterior, HPL interior
Unfinished top - 3/4" HPL Interior, white liner exterior
Unfinished back – 1/2" HPL interior, white liner exterior
Unfinished shelves - 3/4" HPL 2 sides (Less than 27" wide)
Unfinished shelves – 1" HPL 2 sides (27" and wider)
Doors – None
Cabinet edgeband - .018 PVC
Door edgeband – .None

Standard Hardware

Hinges – None
Pull – None
Shelf Clips – 5mm metal spoon

Standard Options

Finished ends – 3/4" HPL exterior, HPL interior
Light Rails – 3/4" HPL strip, shipped loose for field installation. (Light rail butts finished ends. Cabinet Height does not include the height of the light rail)

Custom Options

Hang rails – 3/4" plywood "French Cleats". Wall cleat shipped loose for field installation.
Locks – None
Finished Interiors – Finished Interiors are standard because of the exposed open area. Please unselect FI if white melamine is desired

Accessory Options

See Accessory list which include Hardware, Components and Operations.