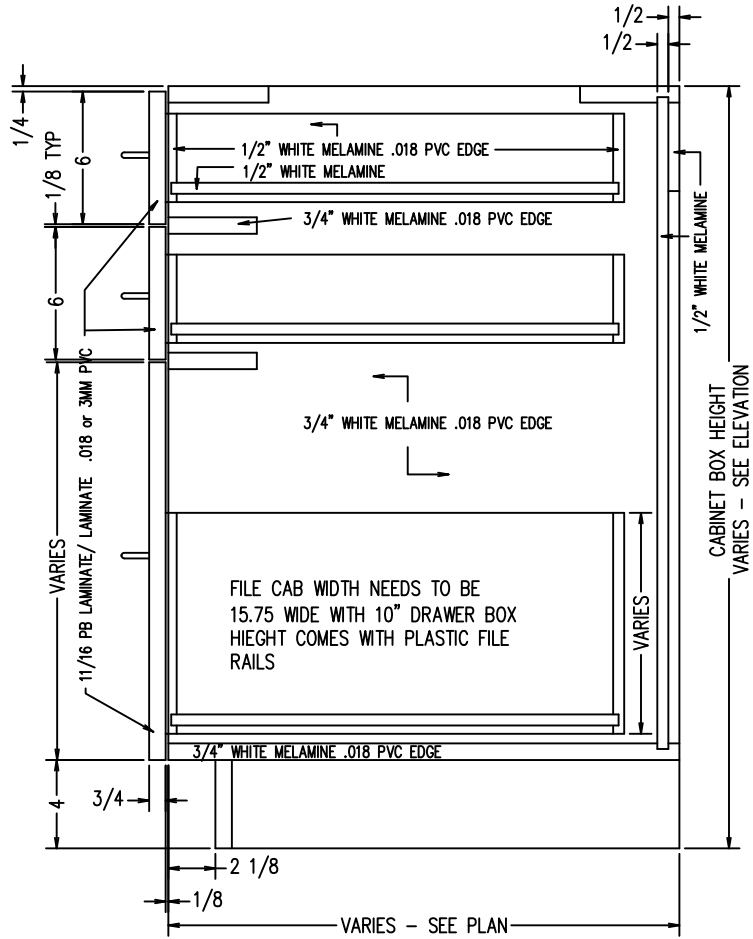
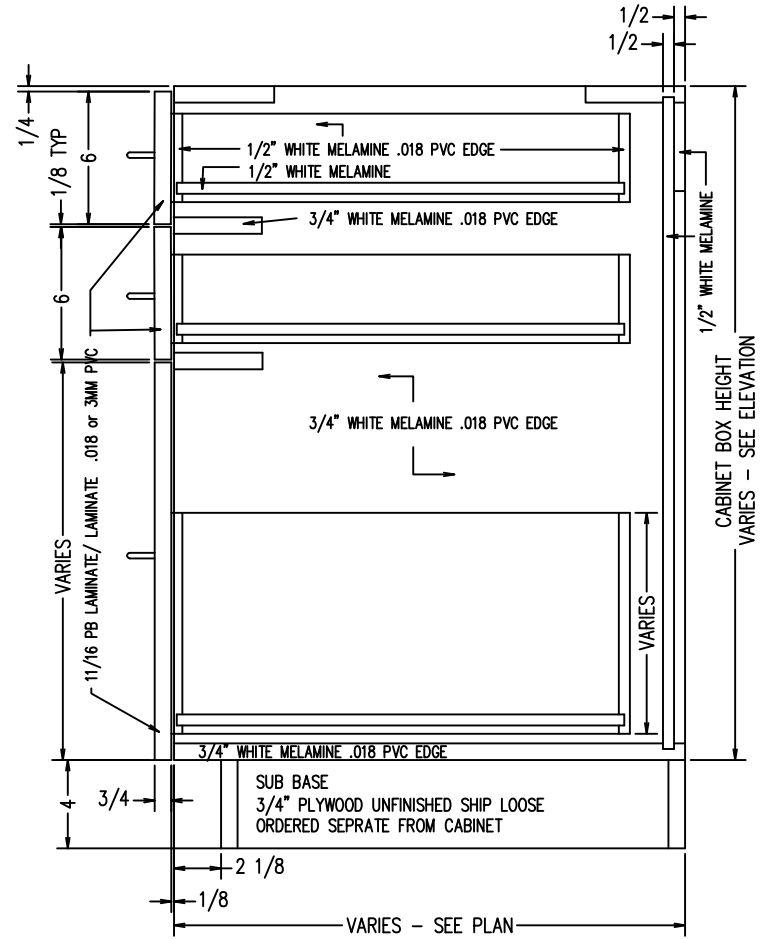


SEE PRODUCT MATRIX ON MIN MAX SIZES



TYPICAL B0D3D-2
 INTEGRAL TOE KICK
 SCALE: 1-1/2" = 1'-0"

TOP DRAWER MAY NEED
 TO VARY IF FOR BTM
 FILE DRAWER



TYPICAL B0D3D-2
 FOR SUB BASE
 SCALE: 1-1/2" = 1'-0"