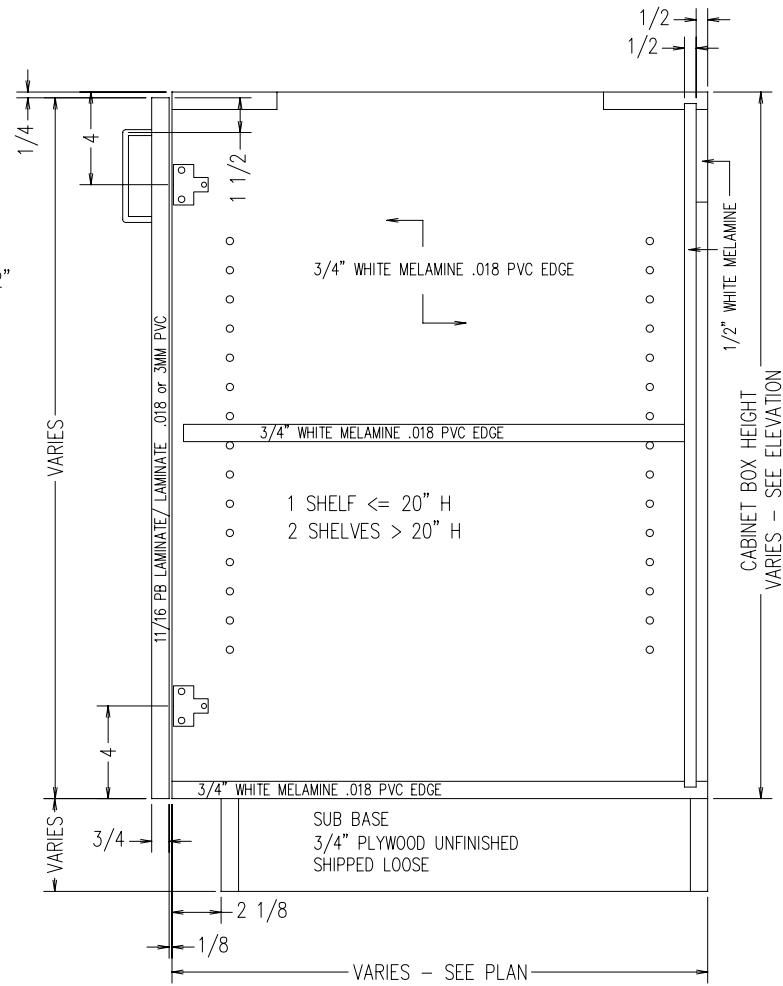


MIN WIDTH = 21"  
 MAX WIDTH = 48"  
 MIN HEIGHT = 16"  
 MAX HEIGHT = 35"  
 MIN DEPTH = 9"  
 MAX DEPTH = 28-1/2"

TYPICAL B2D  
 INTEGRAL TOE KICK  
 SCALE: 1-1/2" = 1'-0"



MIN WIDTH = 21"  
 MAX WIDTH = 48"  
 MIN HEIGHT = 12"  
 MAX HEIGHT = 32"  
 MIN DEPTH = 9"  
 MAX DEPTH = 28-1/2"

TYPICAL B2D  
 FOR SUB BASE  
 SCALE: 1-1/2" = 1'-0"