

TYPICAL W1D & W2D  
W/OUT LIGHT RAIL  
SCALE: 1-1/2" = 1'-0"

### TYPICAL SPECIFICATIONS

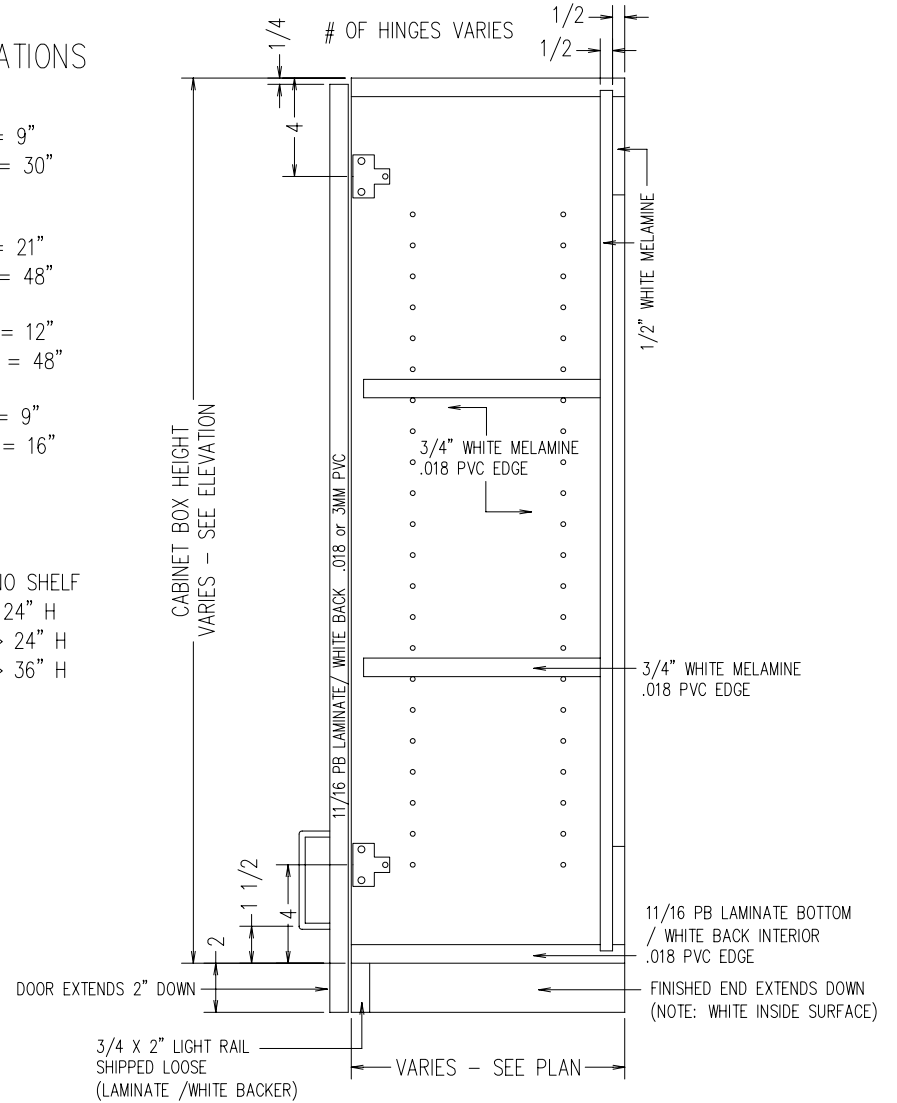
W1D  
MIN WIDTH = 9"  
MAX WIDTH = 30"

W2D  
MIN WIDTH = 21"  
MAX WIDTH = 48"

MIN HEIGHT = 12"  
MAX HEIGHT = 48"

MIN DEPTH = 9"  
MAX DEPTH = 16"

UNDER 14" NO SHELF  
1 SHELF <= 24" H  
2 SHELVES > 24" H  
3 SHELVES > 36" H



TYPICAL W1D & W2D  
WITH LIGHT RAIL  
SCALE: 1-1/2" = 1'-0"