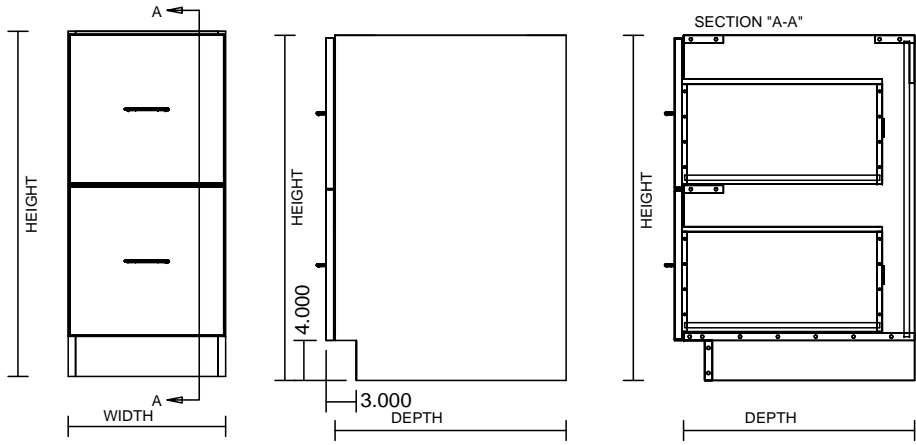
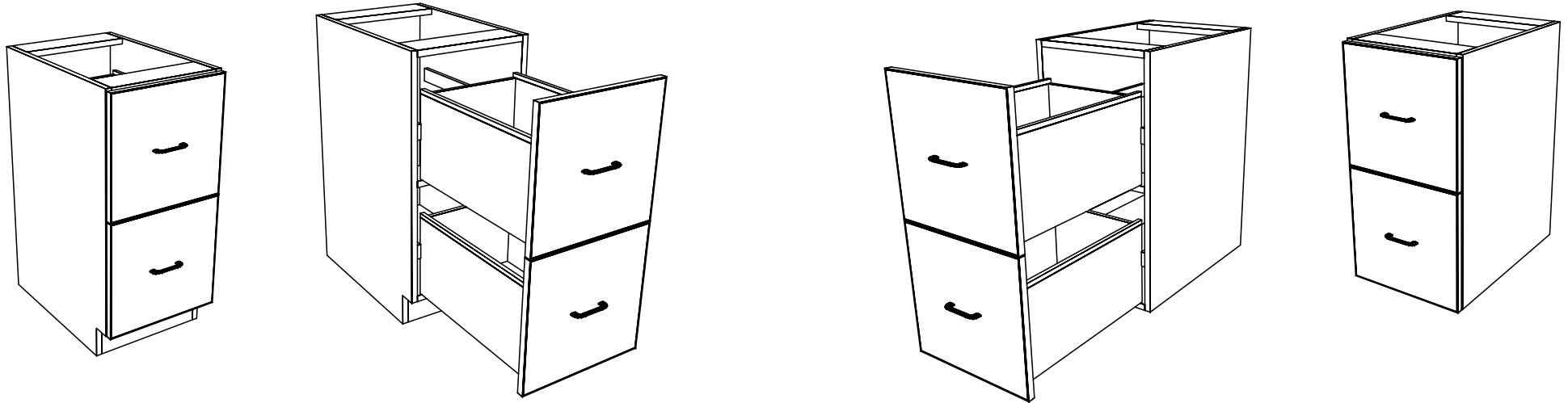
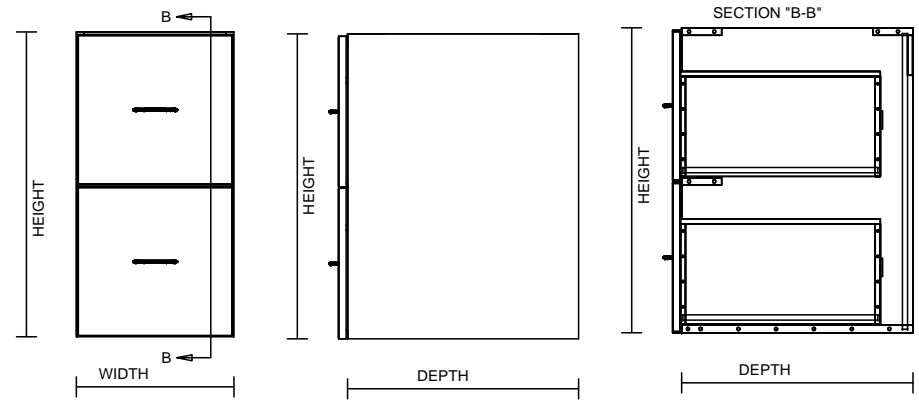


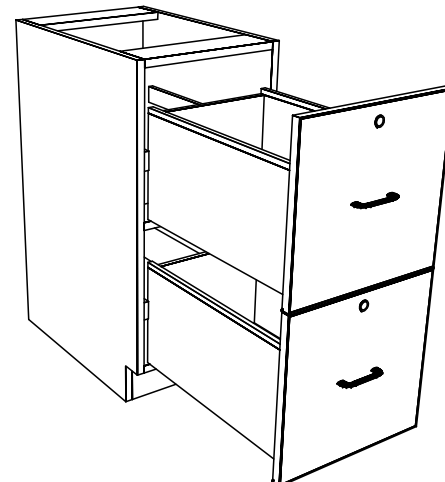
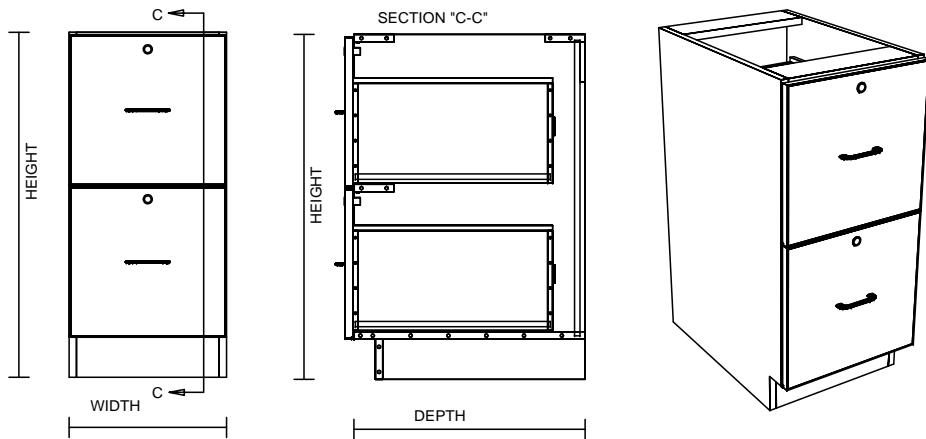
TYPICAL INTEGRAL KICK CABINET



TYPICAL SUB BASE CABINET



TYPICAL LOCK CABINET



TYPICAL SPECIFICATIONS:

- MIN WIDTH - 15.75"
- MAX WIDTH - 48"
- MIN HEIGHT - 25.5"
- MAX HEIGHT - 36"
- MIN DEPTH - 11.125"
- MAX DEPTH - 28.5"