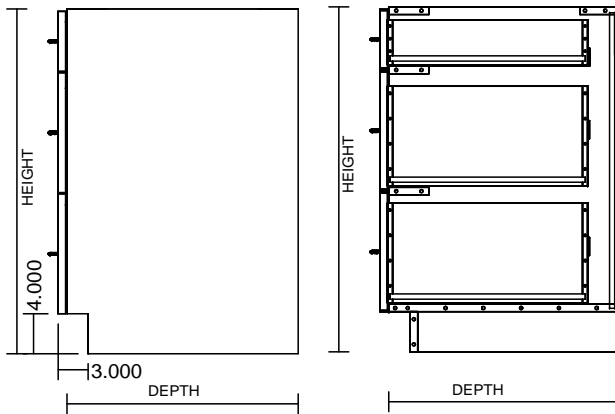
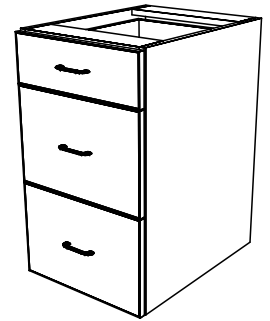
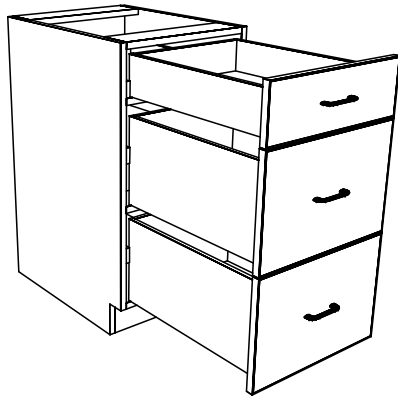
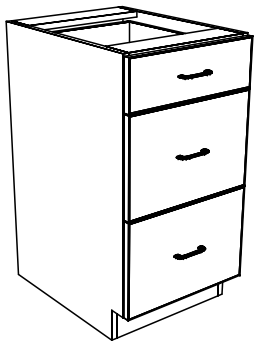
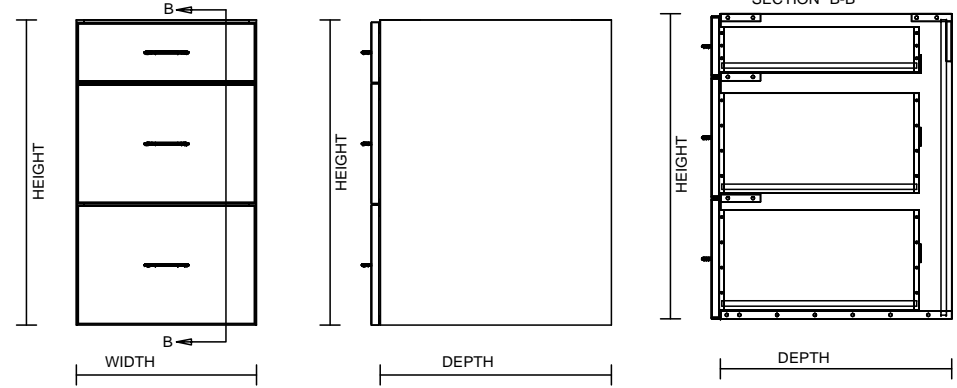


TYPICAL INTEGRAL KICK CABINET SECTION "A-A"

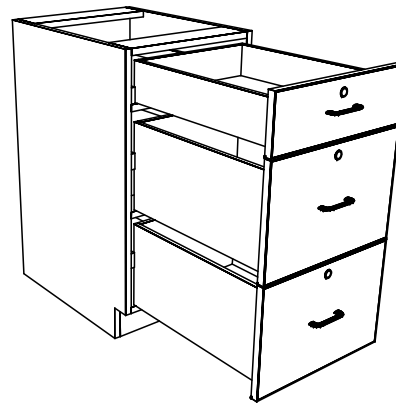
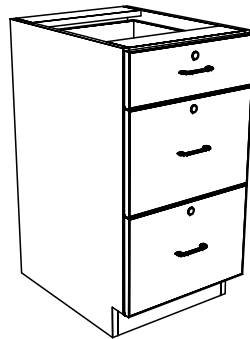
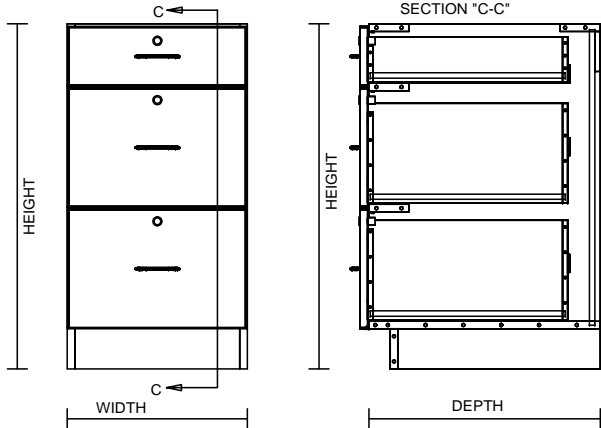


TYPICAL SUB BASE CABINET



TYPICAL LOCK CABINET SECTION "C-C"

SECTION "C-C"



TYPICAL SPECIFICATIONS:

MIN WIDTH - 9"  
MAX WIDTH - 48"

MIN HEIGHT - 22"  
MAX HEIGHT - 36"

MIN DEPTH - 11.125"  
MAX DEPTH - 28.5"