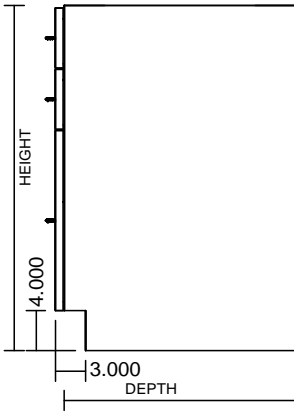
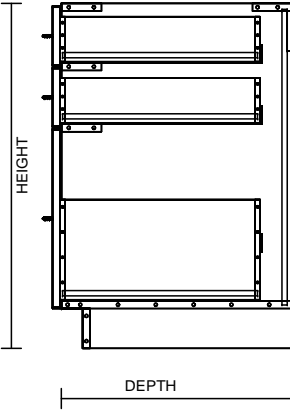


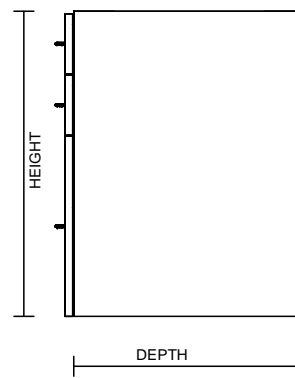
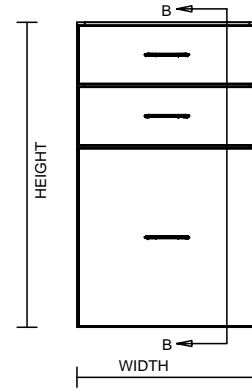
TYPICAL INTEGRAL KICK CABINET



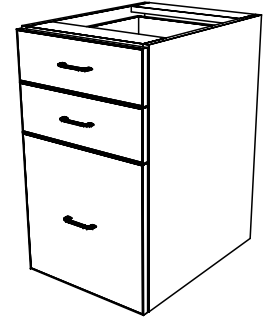
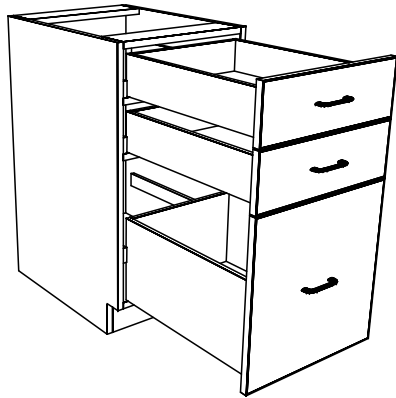
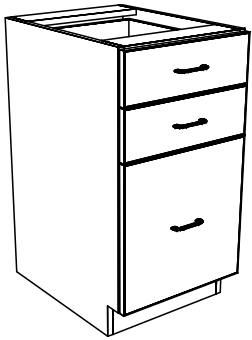
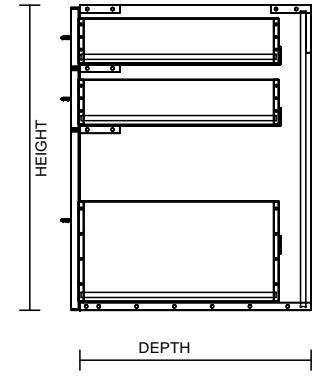
SECTION "A-A"



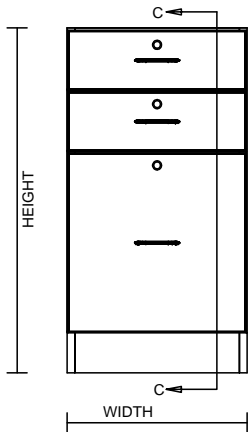
TYPICAL SUB BASE CABINET



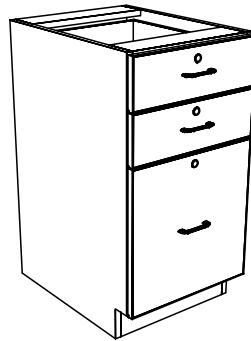
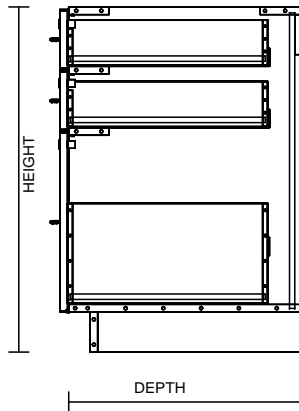
SECTION "B-B"



TYPICAL LOCK CABINET



SECTION "C-C"



TYPICAL SPECIFICATIONS:

MIN WIDTH - 9"
MAX WIDTH - 48"

MIN HEIGHT - 22"
MAX HEIGHT - 36"

MIN DEPTH - 11.125"
MAX DEPTH - 28.5"