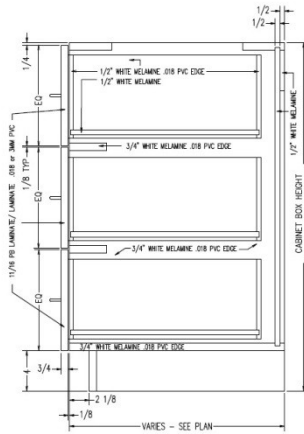




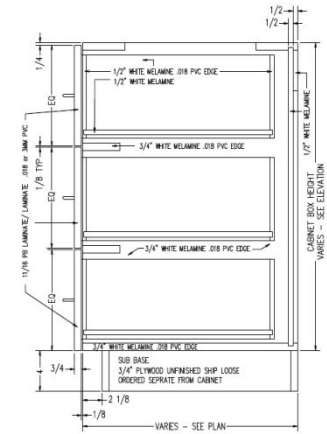
## BOD3D



### Base 3 drawer cabinet



TYPICAL BOD3D  
INTEGRAL TOE KICK



TYPICAL BOD3D  
FOR SUB BASE

Laminate cabinets are available in a wide range of standard features and options. Additionally, custom configurations are possible. The website supports many of the features needed to quote and order commercial grade laminate or melamine products. The best value is made available by selecting from the standard features listed below (Default settings in the configurator)

#### Standard door

None

#### Standard Sizes

- Width ranges 9" to 30"
- Height ranges 18" to 42"
- Depth ranges 9" to 30"

#### Standard features

- Unfinished Sides – 3/4" white melamine
- Finished Sides - 3/4" HPL exterior, white liner interior
- Unfinished bottom - 3/4" white melamine
- Unfinished top stretchers - 3/4" white melamine
- Unfinished back – 1/2" white melamine (Dado in sides)
- Unfinished shelves - None
- Unfinished shelves – None
- Drawer front – 3/4" HPL exterior, white liner interior
- Cabinet edgeband - .018 PVC
- Drawer front edgeband – .018 PVC or 3mm PVC
- Drawer Box – 1/2" white melamine

#### Standard Hardware

- Hinges – None
- Drawer Slide – FR5000 Fullerter full extension ball bearing (100 lb.)
- Pull – 4" satin chrome wire pull
- Shelf Clips – None

#### Standard Options

- Finished ends – 3/4" HPL exterior, white liner interior

#### Custom Options

- Sub-Bases – 3/4" plywood construction (Cabinets have a flush bottom, sub bases ordered separately)
- Locks – Choice of lock and key options
- Finished Interiors – 3/4" HPL interiors with either white liner exterior or matching HPL exteriors, determined by finished end selection.

#### Accessory Options

See Accessory list which include Hardware, Components and Operations.