



## B1D1D

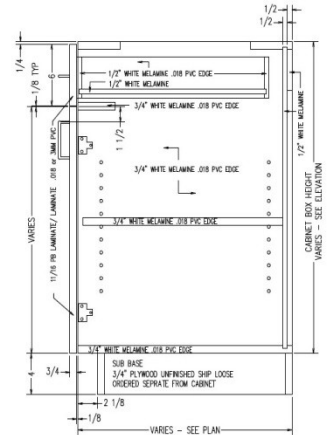
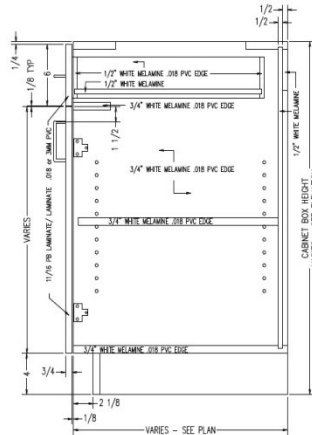


Left Hand Hinge



Right Hand Hinge

### Base 1 door, 1 drawer cabinet



Laminate cabinets are available in a wide range of standard features and options. Additionally, custom configurations are possible. The website supports many of the features needed to quote and order commercial grade laminate or melamine products. The best value is made available by selecting from the standard features listed below (Default settings in the configurator)

#### Standard door

- Left hand hinge
- Right hand hinge

#### Standard Sizes

- Width ranges 9" to 24"
- Height ranges 18" to 42"
- Depth ranges 9" to 30"

#### Standard features

- Unfinished Sides – 3/4" white melamine
- Finished Sides - 3/4" HPL exterior, white liner interior
- Unfinished bottom - 3/4" white melamine
- Unfinished top stretchers - 3/4" white melamine
- Unfinished back – 1/2" white melamine (Dado in sides)
- Unfinished shelves - 3/4" white melamine (Less than 27" wide)
- Unfinished shelves – 1" white melamine (27" and wider)
- Door and Drawer front – 3/4" HPL exterior, white liner interior
- Cabinet edgeband - .018 PVC
- Door and Drawer front edgeband – .018 PVC or 3mm PVC
- Drawer Box – 1/2" white melamine

#### Standard Hardware

- Hinges – 120 degree Blum Hinge
- Drawer Slide – FR5000 Fullerter full extension ball bearing (100 lb.)
- Pull – 4" satin chrome wire pull
- Shelf Clips – 5mm metal spoon

#### Standard Options

- Finished ends – 3/4" HPL exterior, white liner interior

#### Custom Options

- Sub-Bases – 3/4" plywood construction (Cabinets have a flush bottom, sub bases ordered separately)
- Locks – Choice of lock and key options
- Finished Interiors – 3/4" HPL interiors with either white liner exterior or matching HPL exteriors, determined by finished end selection.

#### Accessory Options

- See Accessory list which include Hardware, Components and Operations.